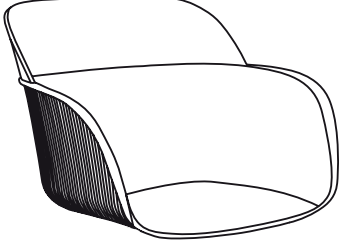


# KURULUM ŞEMASI

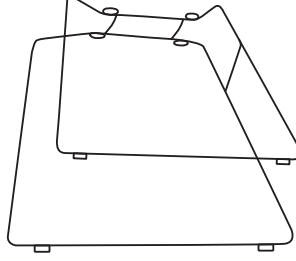
# Shell-U Koltuk

İçerik

a) 1ad. Shell Kabuk



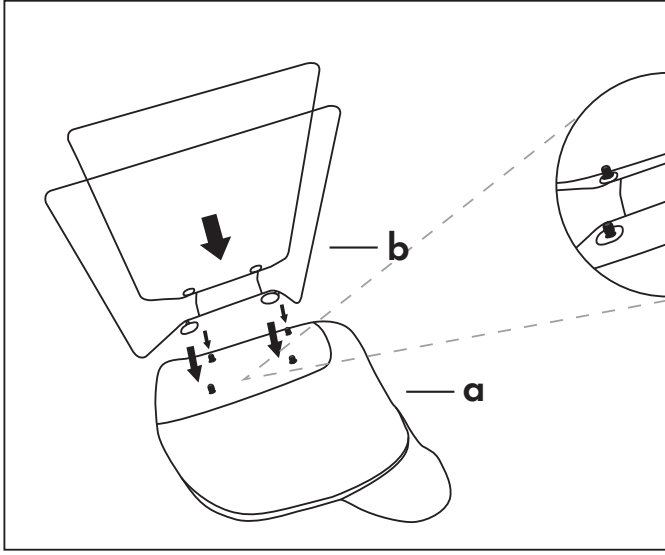
b) 1ad. Metal Ayak



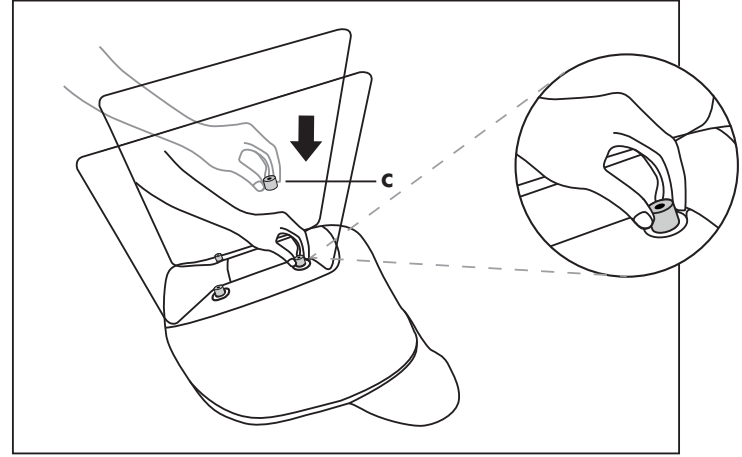
c) 4 ad. 6'lık Pul



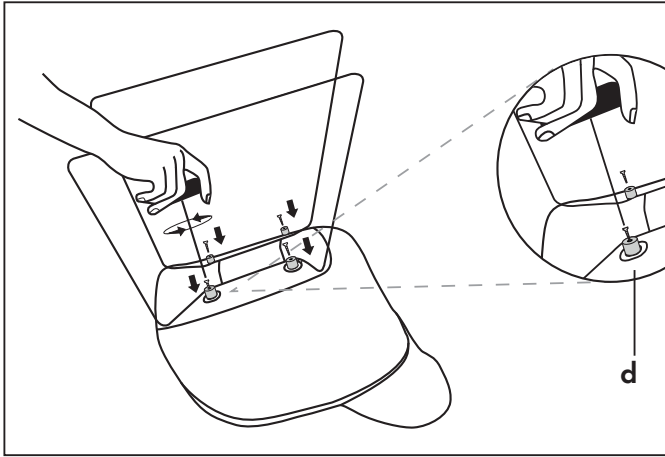
d) 4 ad. M6x20 Vida



**1** Metal Ayak, Shell kabuğun alt kısmına, yüksek kısım kabuğun ön tarafına denk gelecek şekilde yerleştirilir.



4 adet pul, Shell kabuğun altında bulunan 2 pimlere yerleştirilir.



**3** 4 adet vida, pul yerleştirilen kısımlara 6 alyan veya 6 alyan uçlu şarjli matkap ile sabitlenir ve kurulum tamamlanır.

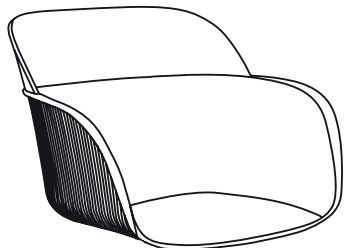
! Lütfen montajınızı yaparken vida deliklerini atlamamaya, vidaların tam ve sıkı olduğuna emin olunuz. Aksi halde ürünün kullanımı sırasında kırılma/çatlama ile karşılaşabilirsiniz.

# ASSEMBLY SCHEMA

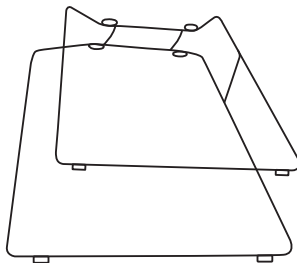
# Armchair **Shell-U**

## Contents

**a)** 1pc. Shell Seat



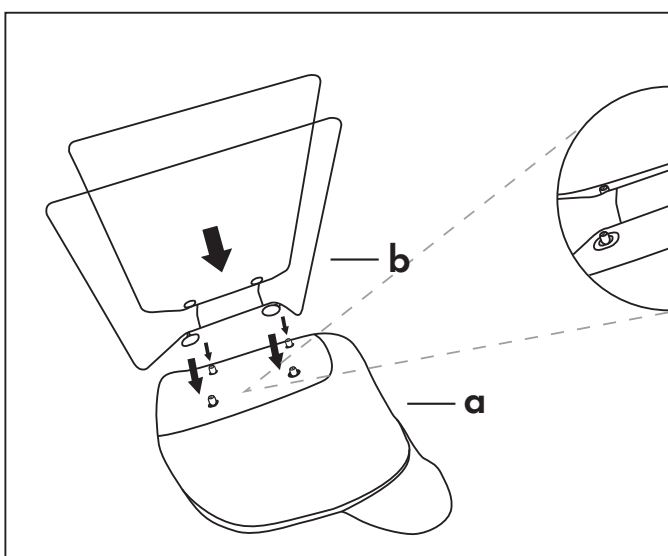
**b)** 1pc. Metal Leg



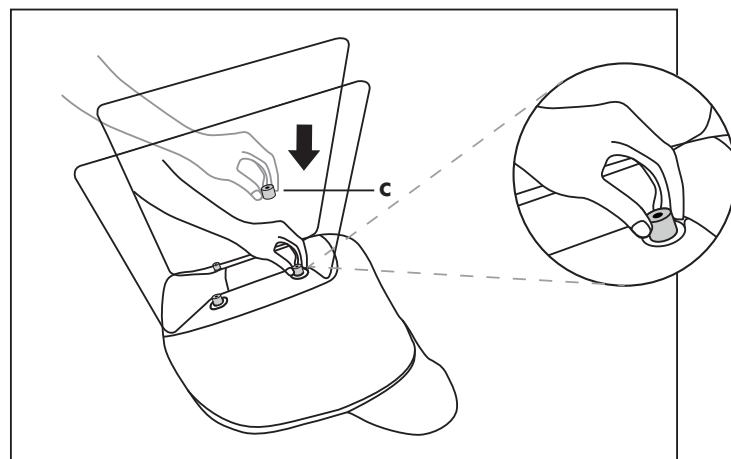
**c)** 4 pcs. 6 Washer



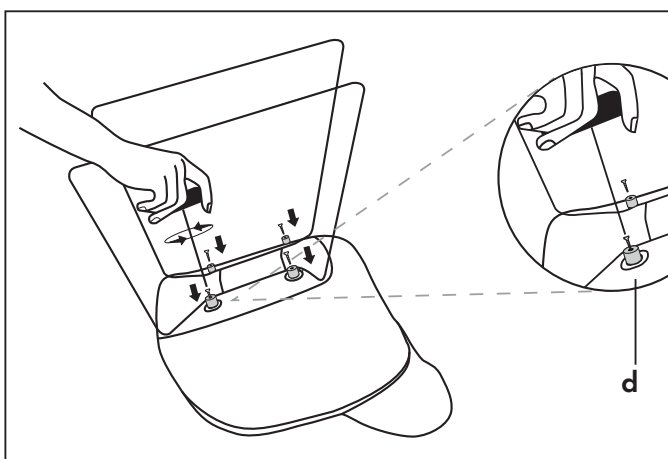
**d)** 4 pcs. M6x20 Screw



**1** The Metal Leg is placed on the lower part of the seat, with the higher part facing the front of the seat.



Place washers on the pins located under the seat. **2**



**3** Screw on all four washers with an allen or cordless drill with allen tip.

! Please be sure not to miss any screw holes and fasten all screws equally and tightly. Otherwise, you may face breakage or cracking during the time of usage.