



ASSEMBLY SCHEMA

Table Base Moon 49/67 cm

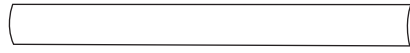
(Foldable)

Contents

a) 1 pc. Cross with Mechanism



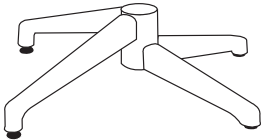
c) 1 pc Metal Tube



d) 1 pc Weight Mounted Driftbolt



b) 1 pc Leg



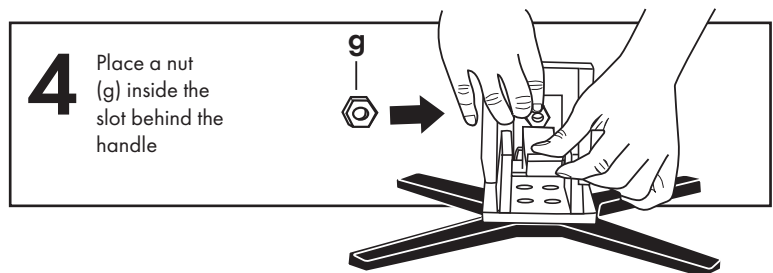
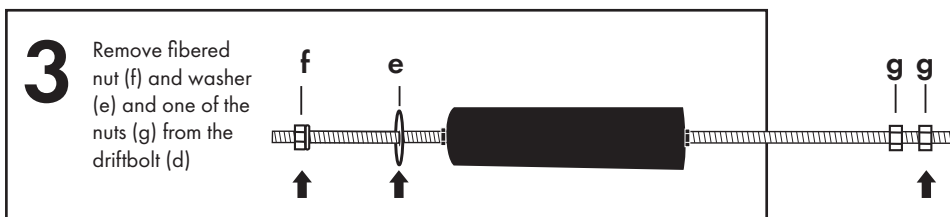
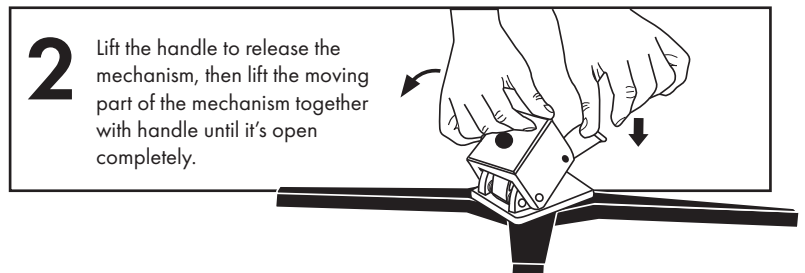
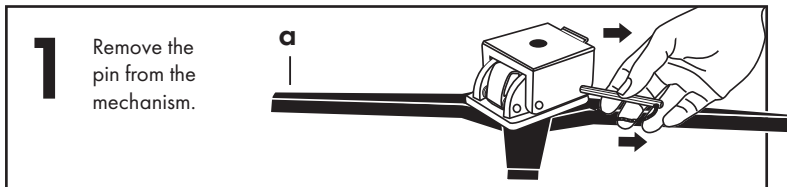
e) 1 pc Washer



f) 1 pc Fibered Nut



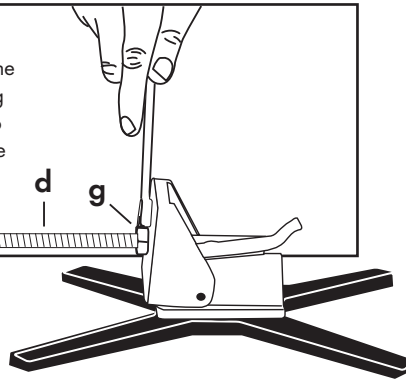
g) 2 pcs M10 Nuts



! Please be sure not to miss any screw holes and fasten all screws equally and tightly.
• Otherwise, you may face breakage or cracking during the time of usage.

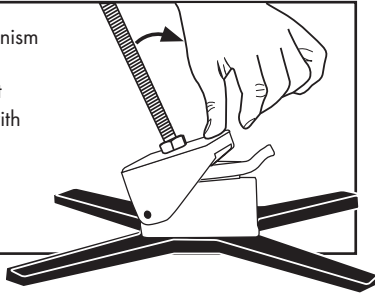
5

Ensure there is one nut (g) available on the long side of the balance weight. Place the long side of the balance weight into the mechanism, then tighten the nut (g) with 17 wrench.



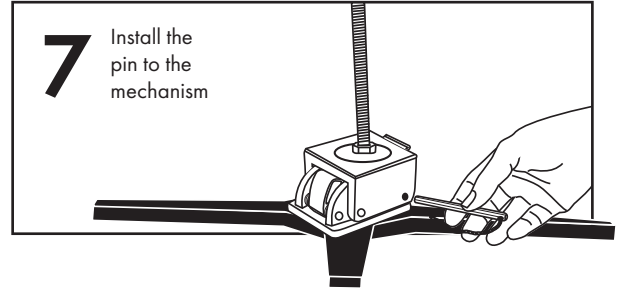
6

Close the mechanism together with the balanced weight (no interaction with handle required)



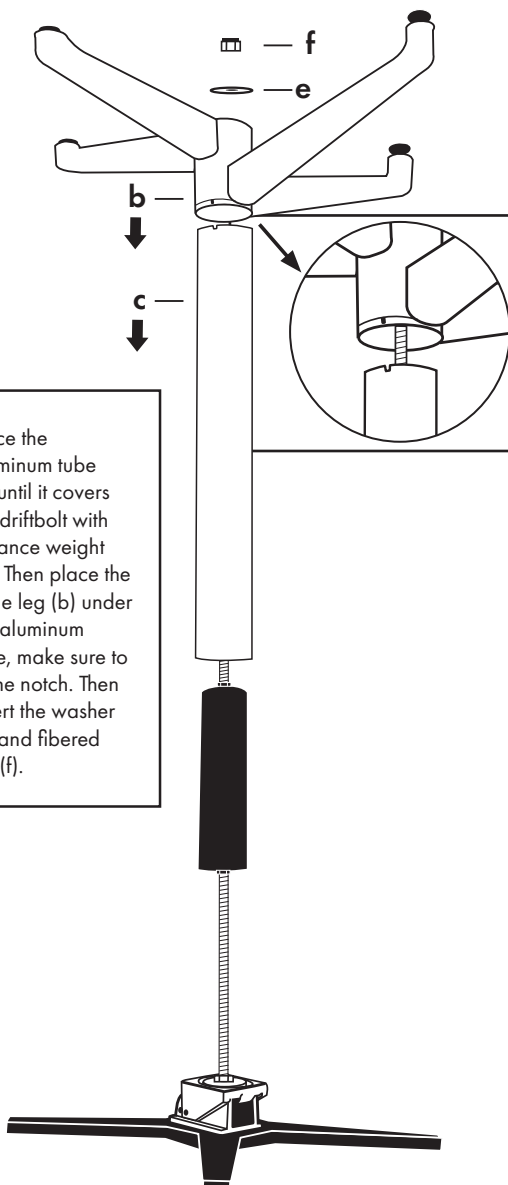
7

Install the pin to the mechanism

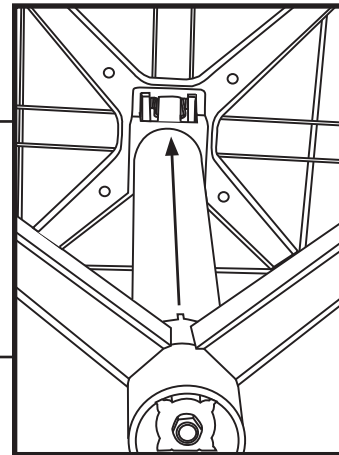


8

Place the aluminum tube (c) until it covers the driftbolt with balance weight (d). Then place the table leg (b) under the aluminum tube, make sure to fit the notch. Then insert the washer (e) and fibered nut (f).



! The direction of closure of the table and the notch of the leg must be in the same direction



9

Tighten the nut with a 17 wrench or ratchet.

