



ASSEMBLY GUIDE

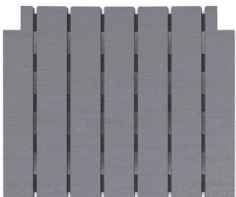
Lounge Set Silva

Content

a) 4 pcs. Backrest



b) 4 pcs. Seat



c) 1 pcs. Table Base



d) 52 pcs. Screw



e) 1 pc. Allen



f) 4 ad. Table Leg
Extender (Optional)



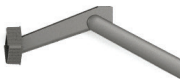
g) 3 pc. Left Arm
3 pc. Right Arm



h) 1 pc. Middle Connection
Part



i) 4 pcs. Table Leg



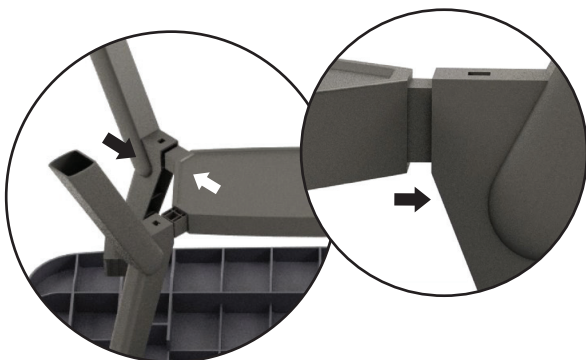
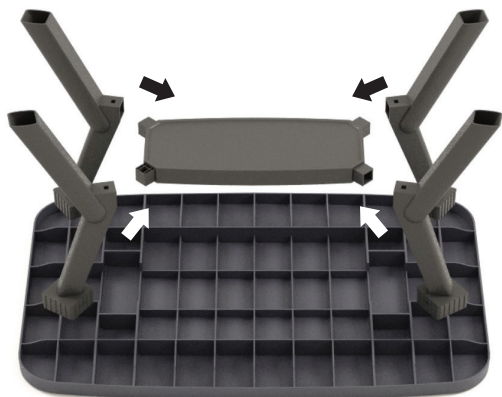
j) 1 pc. Table Middle
Connection Part



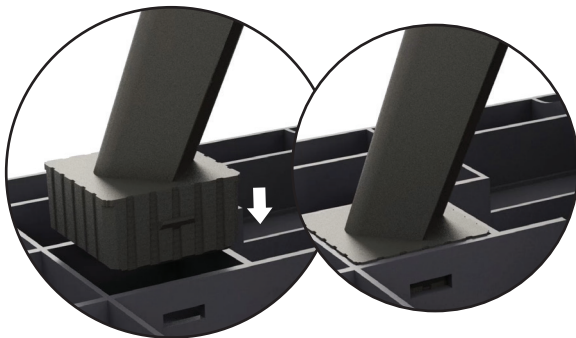
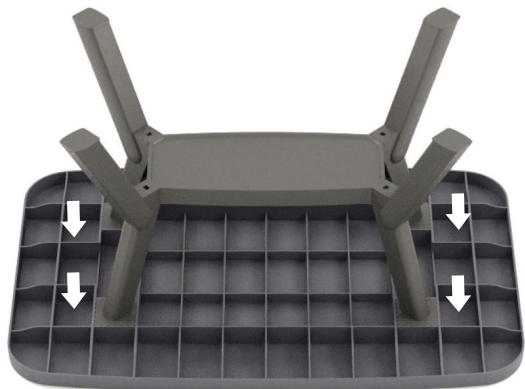
k) 4 pcs Front
Connection Part



l) 4 pcs. Back Connection
Part

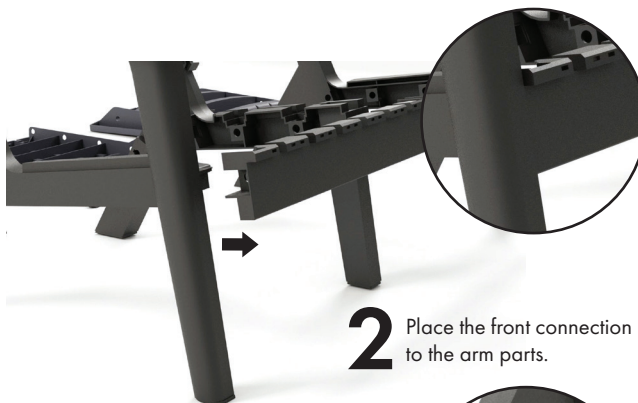
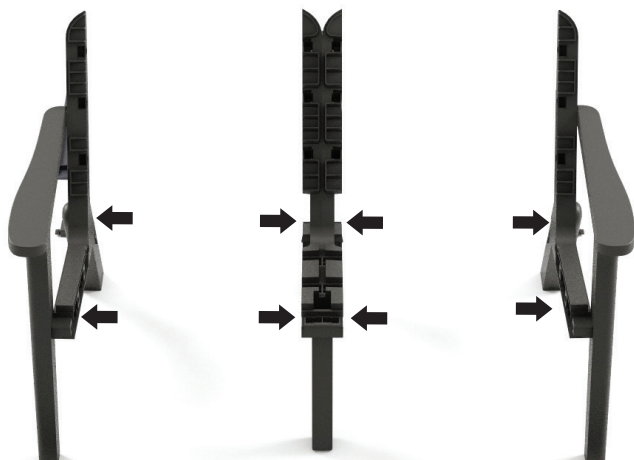


1 Place table legs into the middle connection part as shown on figure.



2 Place the table leg gently to the slots available on table base.

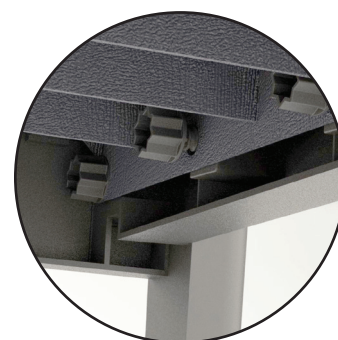
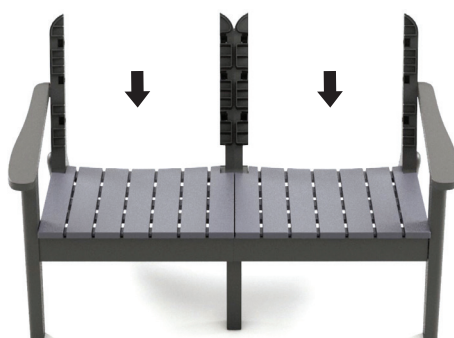
1 Place the left and right arm parts upright and parallel to each other.



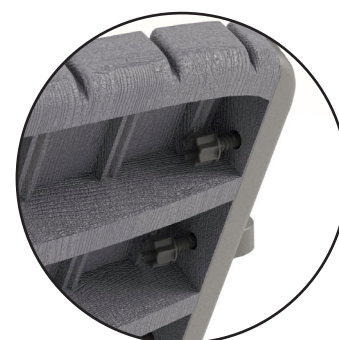
2 Place the front connection part to the arm parts.



3 Place the rear connection part to the slots available in the back of the arm parts, then twist to lock.



4 Place the seat part from the top. Make sure the mounting holes match. Then mount the part gently with the plastic screws available.



5 Then place the backrest to the seat. Make sure the mounting holes match. Then mount the part gently with the plastic screws available.



Please use the allen provided in the box while tightening plastic screws. Do not over-tighten it it might break the connection port.