

Snap

Content

a) 2 pc. Leg



b) 2 pc. Leg Pipes



c) 4 pc. Wheel



d) 2 pc. Mechanism



e) 1 pc. Connection Pipe



f) 4 pc. Nut



g) 4 pc. Connection Screw



h) 2 pc. Connection Screws (Out)



i) 2 pc. Connecting Screws (In)



k) 2 pc. Connection Center



l) 1 pc. Mechanism Pipe



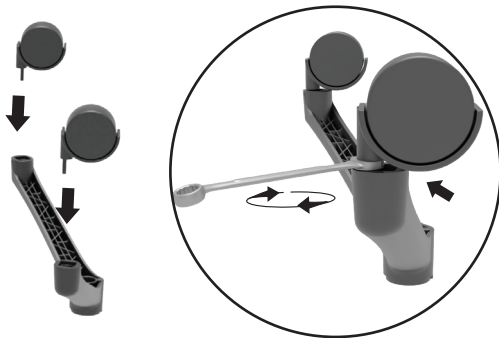
m) 2 pc. Connecting Nuts



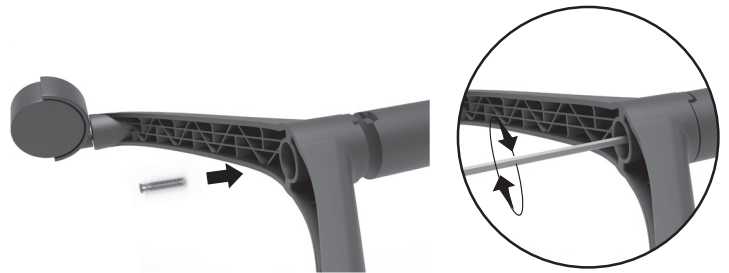
n) 2 pc. Connection Pipe



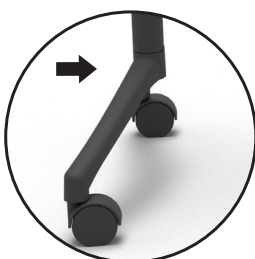
o) 2 pc. Rail Mechanism



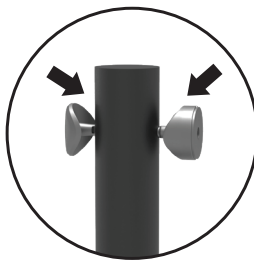
1 Mount the wheels (c) onto the feet (a) and secure them with a suitable tool (such as a wrench).



2 Join the leg (a) to the leg tube (b), taking into account the notch, and tighten first the washer (e), then the connecting screw (f) with a suitable tool (8mm Allen key).



3 Keep the leg tube (b) with the curved parts inward.



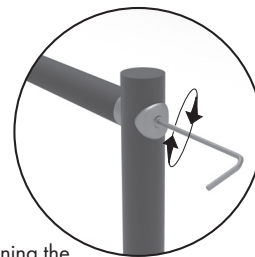
4 Attach the external connecting nut (h) and the internal connecting nut (i) to their places.



5 Attach the middle connecting tube (e) to the internal connecting nut (i) taking into account the notches.



6 Apply the same process to the other leg. Attach the middle piece and secure it with the appropriate tool (5mm Allen key) by fastening the connecting screws.

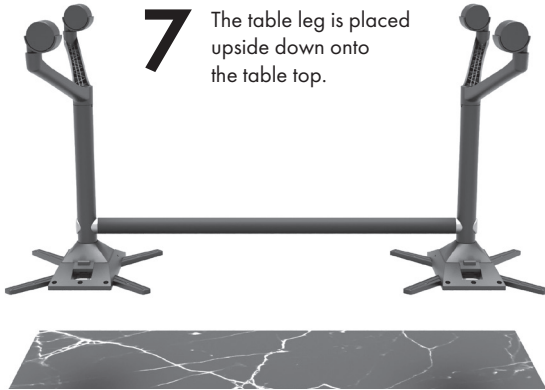
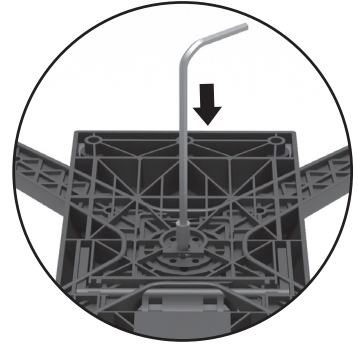


! Please make sure to not skip any screw holes during your assembly and ensure that the screws are fully and tightly secured. Otherwise, you may encounter breakage/cracking during use of the product.



6

The table connector part (d) is placed appropriately onto the completed leg tubes (b). The washer (f) and screw (g) are attached and secured with the appropriate tool.

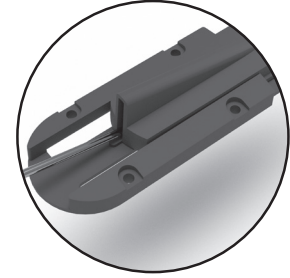
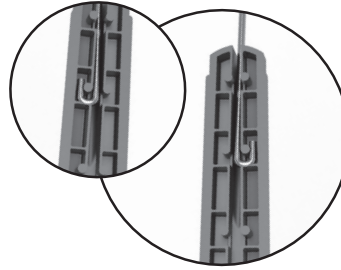


7

The table leg is placed upside down onto the table top.

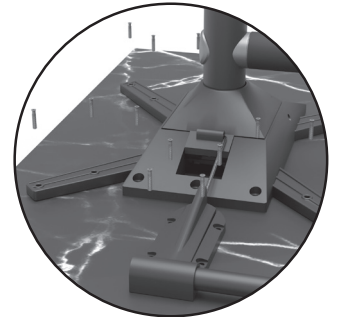
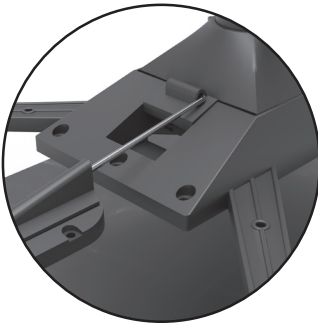
LEFT

RIGHT



8

Place the mechanism spring (n) onto the inner mechanism part (k) (for both left and right directions), and insert the outer mechanism part (o) into the inner mechanism part (k).



9

The assembled mechanism parts are attached to the table connector part (d) in the appropriate position for left and right directions.

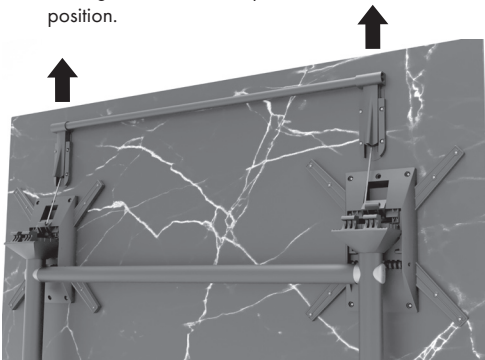
10

The mechanism parts are combined with the mechanism tube (l).

11

All table connector screws on the positioned leg on the tabletop are applied with the appropriate tool, and the installation is completed.

You can raise the mechanism tube (l) to bring the table to the open or closed position.



! Please make sure to not skip any screw holes during your assembly and ensure that the screws are fully and tightly secured. Otherwise, you may encounter breakage/cracking during use of the product.

a) 2 ad. Ayak



b) 2 ad. Ayak Borusu



c) 4 ad. Tekerlek



d) 2 adet Mekanizma



e) 1 ad. Orta Bağlantı Borusu



f) 4 ad. Pul



g) 4 ad. Bağlantı Vidası



h) 2 ad. Dış Bağlantı Somunu



ı) 2 ad. İç Bağlantı Somunu



k) 2 ad. Mekanizma Parçası (iç)



l) 1 ad. Mekanizma Borusu



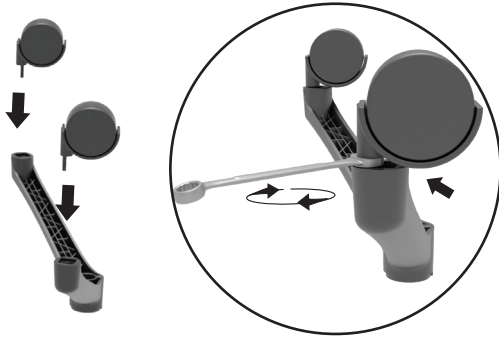
m) 2 ad. Orta Parça Bağlantı Vidası



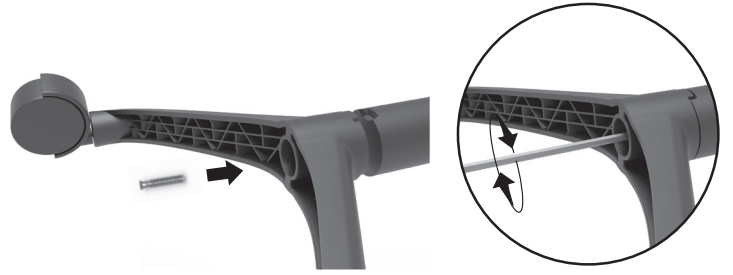
n) 2 ad. Mekanizma Yayı



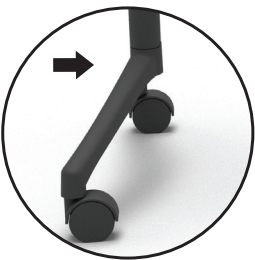
o) 2 ad. Mekanizma Parçası (dış)



1 Tekerleri (c) ayaklara (a) monte ederek uygun el aleti ile (anahtar) sabitleyiniz.

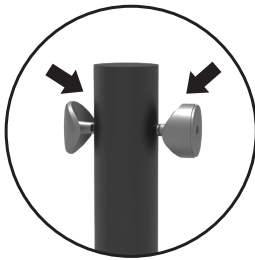


2 Ayağı (a) Ayak borusuyla (b) çentiği dikkate alarak birleştiriniz ve önce pul (e) sonra bağlantı vidasını (f) takarak uygun el aleti ile (8mm alyan) sıkınız.



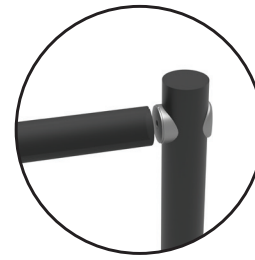
3

Ayak borusunu (b) kavisli kısımlar içe gelecek şekilde diz tutunuz.



4

Dış bağlantı somununu(h) ve iç bağlantı somununu(ı) yerlerine takın.



5

İç bağlantı somununa(ı) çentikleri dikkate alarak orta bağlantı borusunu(e) takın.



6

Diğer ayağa da aynı işlemi uygulayın. Orta parça bağlantı vidalarını takarak uygun el aleti ile (5mm alyan) sabitletin.

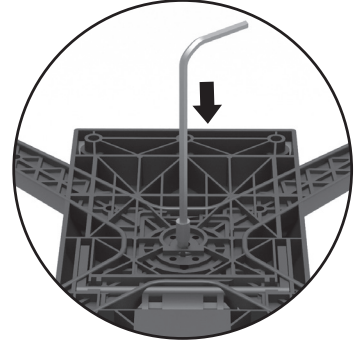


Lütfen montajınızı yaparken vida deliklerini atlamayın, vidaların tam ve sıkı olduğuna emin olun. Aksi halde ürünün kullanımı sırasında kırılma/çatlama ile karşılaşabilirsiniz.



6

Tamamlanan ayak borularının (b) üzerine tabla bağlantı parçası (d) uygun şekilde yerleştirilir. Pul (f) ve vida (g) takılır, uygun el aleti ile sabitlenir.

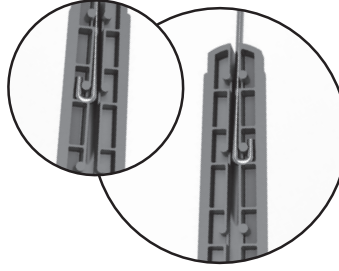


7

Masa ayağı ters olarak tablanın üzerine yerleştirilir.

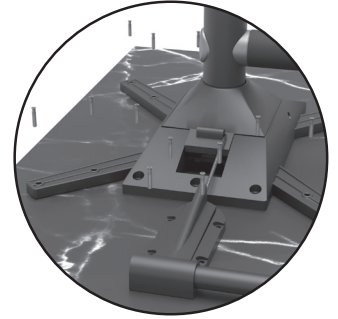
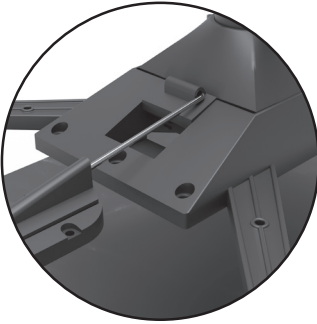
SOL

SAĞ



8

İç mekanizma parçasına(k) mekanizma yayını(n) yerleştirin. (iki taraf için sol ve sağ yön olarak.) Ve dış mekanizma parçasını(o) iç mekanizma parçasına(k) geçirin.



9

Birleştirilen mekanizma parçaları tabla bağlantı parçası(d) üzerinde uygun yere sağ ve sol yön olacak şekilde takılır.

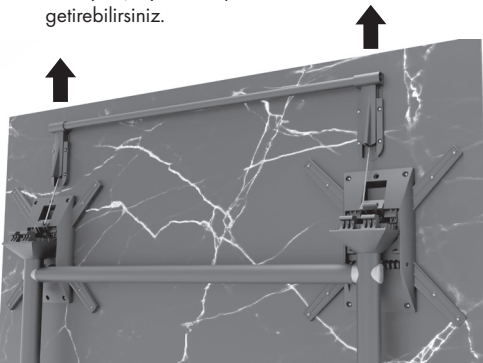
10

Mekanizma parçaları, mekanizma borusu(l) ile birleştirilir.

11

Tablanın üzerinde konumlandırması yapılan ayağın tüm tabla bağlantı vidaları uygun el aleti ile uygulanır ve kurulum tamamlanır.

Mekanizma borusunu(l) yukarı çekerek masayı açık ya da kapalı konuma getirebilirsiniz.



Lütfen montajınızı yaparken vida deliklerini atlamayın, vidaların tam ve sıkı olduğuna emin olun. Aksi halde ürünün kullanımı sırasında kırılma/çatlama ile karşılaşabilirsiniz.